

ECG247 Heart Monitoring Device

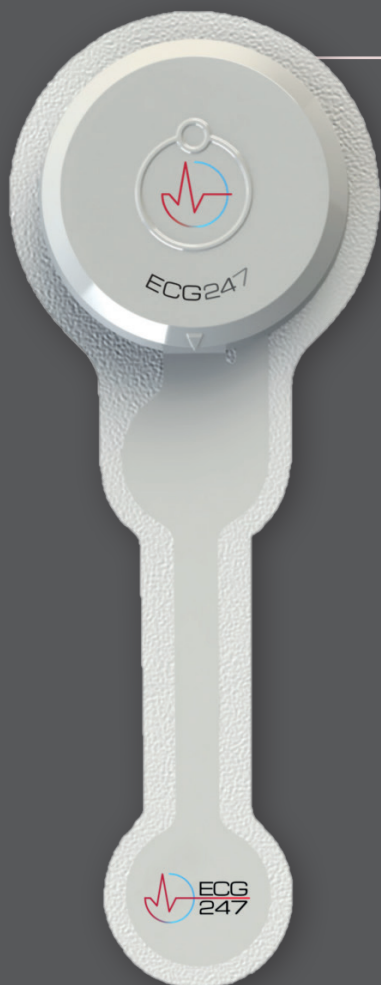
ELECTROCARDIOGRAPHIC LONG-TERM AMBULATORY
RECORDER SYSTEM AND BELONGING SOFTWARE

ECG247 Smart Sensor - Electrocardiographic long-term ambulatory recorder/analyser **GMDN 44423**

ECG247 Electrode - Ambulatory recorder conductive patch **GMDN 62597**

ECG247 APP software - Single-patient physiologic monitoring system application software **GMDN 59378**

ECG247 Web software - Electrocardiographic long-term ambulatory recording analyser application software **GMDN 41651**



CERTIFICATION

CE: 10000366191-PA-NA-NOR,
(MDD 93/42/EEC), Class IIa Medical Device
Other: Bluetooth SIG., BLE
Biocompatibility: According to ISO 10993.

DIMENSIONS

L x w x d: Ø4,01 x 1,09 cm (d), (Sensor),
13,3 x 5,0 x 0,59 cm (Electrode)
Weight: 7,2 gr (Sensor), 6,5 gr (Electrode)
Patch area skin contact: 35,996 cm²
(Electrode)

BATTERY POWER

Maxell CR 2032 3V single use
Lithium 230 mAh
L x w: 3,2 x 20 mm

RADIO BLE

Transmission power <1 mW/0dBm
Bluetooth operating range up to 10 m

ECG RECORDER

Sampling rate: 256 Hz
Bandwidth: 0,5 Hz to 40 Hz
Recording resolution: 16-bit
Binary code, sensitivity: 0,143 µV
Dynamic range: ± 10 mV
Amplifier input impedance: > 10 MΩ

WATER PROTECTION

IP 44 (protected against showering)

STORAGE

Temperature: -25 – +70 °C
Humidity: 0 – 90%
Pressure: 500 – 1060 hPa

RECOMMENDED USERS

Not intended for: Pregnant,
children < 18 years, BMI >40
Not to be used by persons
with pacemakers
Not to be used during defibrillation

SOFTWARE

ECG247APP (requires Android version 9.0
or newer, iOS 11 or newer)
ECG247Web portal (requires web- browser
for PC/MAC: Chrome, Edge, Safari)
Secured Back-end-services (hosted by
ECG247)

DATA SECURITY AND PRIVACY

2-factor user authentication
Data security according to requirements
for sensitive medical information
Privacy according to GDPR

ARRHYTHMIA ANALYSER

(2-stage analyser including
Deep Learning Method)
Atrial Fibrillation
Atrial Flutter
Pause
Ventricular Tachycardia
Supraventricular Tachycardia
Bradycardia (HR < 30 b/min)
Tachycardia (HR > 180 b/min)
Ventricular Extrasystole
Supraventricular Extrasystole

RE-USABLE SENSOR

After cleaning and disinfecting
with a damp cloth/wipe
(Ecolab Incidin Duo or similar)

TEST DURATION

Recommended test duration:
minimum 3 days
Maximum test duration: 14 days

ACCESSORIES

Smartphone with mobile
data communication