

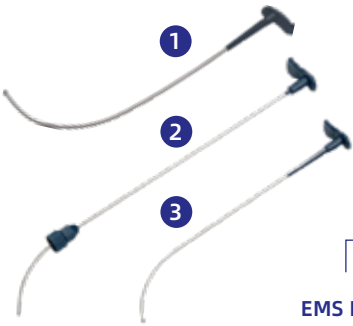
Accessories

Rigid Stylet

For use with endotracheal tubes ≥ 6.0mm;
Recommended to facilitate successful intubations

Item code:

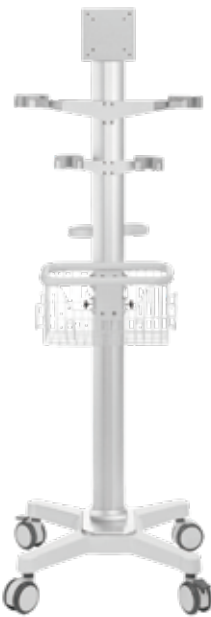
- 1 210-0063-00
- 2 210-0035-00
- 3 102-0364-00



Mobile Stand

A stand-alone configuration for use in a variety of hospital settings

Item code: 105-0152-00



EMS Bag

Color: BLUE/RED
Size: 3.5inch/8inch

Item code:
8inch(105-0340-00)
3.5inch(210-0505-00)



Reusable Blades			
Model No.	Item code	Size(L*W*H)	Applicable patients
Miller 00	210-0036-00	72x14x29.5	premature
Miller 0	210-0012-00	84x15x29.5	newborn
Miller 1	210-0013-00	110x15x29.5	infant
Mac 1	210-0014-00	101x18x34	infant
Mac 2	210-0060-00	115x21x36.5	children
Mac 3	210-0061-00	126.5x21x39.5	adult
Mac 4	210-0062-00	136x22.5x43	difficulty (obese)
Mac 5	210-0009-00	149.5x23x51	difficulty
Mac D1	210-0103-00	96x18x34	infant
Mac D2	210-0104-00	115x22x50	children
Mac D3	210-0105-00	127x22x53	adult
Mac D4	210-0106-00	136x22x57	difficulty (obese)
Mac D5	210-0107-00	147x22x59	difficulty

Disposable Blades			
Model No.	Item code	Size(L*W*H)	Applicable patients
Mac 1	210-0473-00	101x18x34	infant
Mac 2	210-0474-00	115x21x36.5	children
Mac 3	210-0475-00	126.5x21x39.5	adult
Mac 4	210-0477-00	136x22.5x43	difficulty (obese)
Mac 5	210-0478-00	149.5x23x51	difficulty
CMac 3	210-0470-00	126.5x21x39.5	adult
CMac 4	210-0471-00	136x22.5x43	difficulty (obese)
CMac 5	210-0472-00	149.5x23x51	difficulty



Brochure

Video Laryngoscope

Airway Management Visual Tools



Specifications, design and accessories are subject to change without any notice or obligation on the part of the manufacturer.

HugeMed

Shenzhen HugeMed Medical Technical Development Co., Ltd.
415, 416-1, 516-1, Building 2, No.1, Mawu Road, Baoan Community, Yuanshan Street,
Longgang District, Shenzhen, Guangdong, 518115, China
+86-755-22275833 +86-755-22275833 info@hugemed.net

For more information
please visit our website:
www.hugemed.net

An Endoscopy Solution Company
P/N:ENG-EU-CATA-VL-STD-202310V1.0



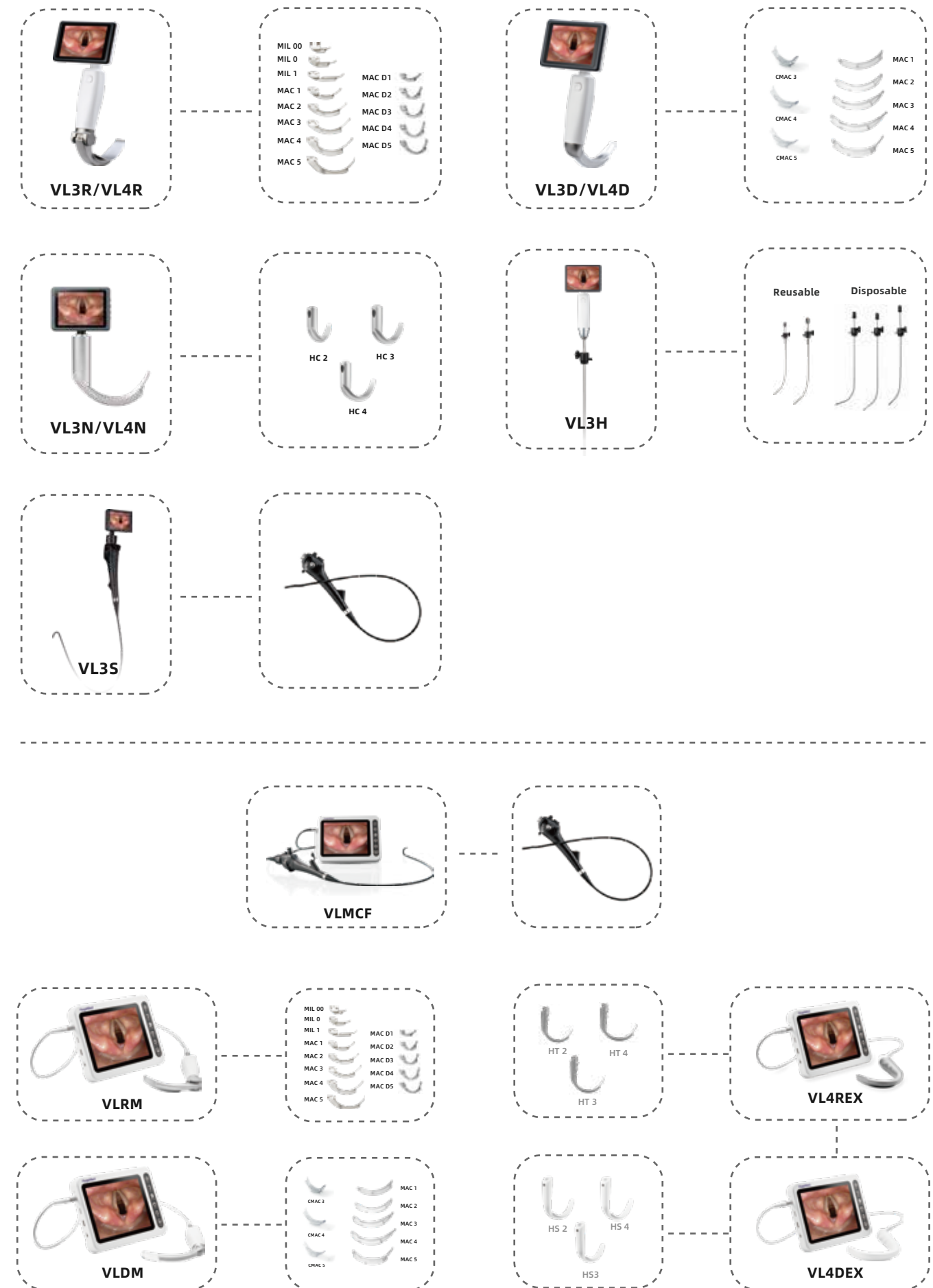
HugeMed

1 Solution

Visual Intubation



HugeMed has launched video laryngoscope for tracheal intubation, with our airway management visualized system, you can perform the routine, anticipate difficult and general intubation. The diverse models and multiple types can support compliant efforts to those challenges in airway management.

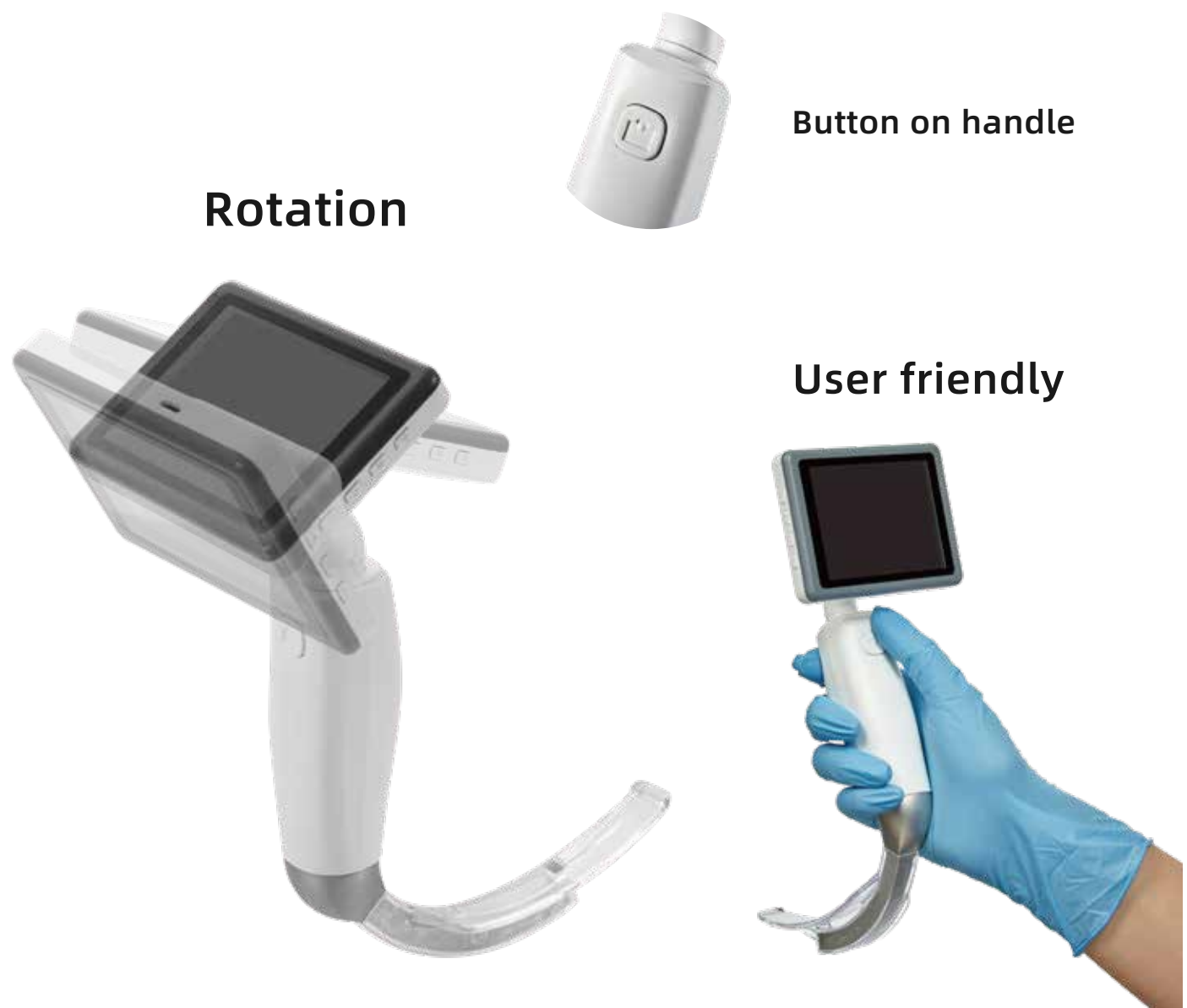
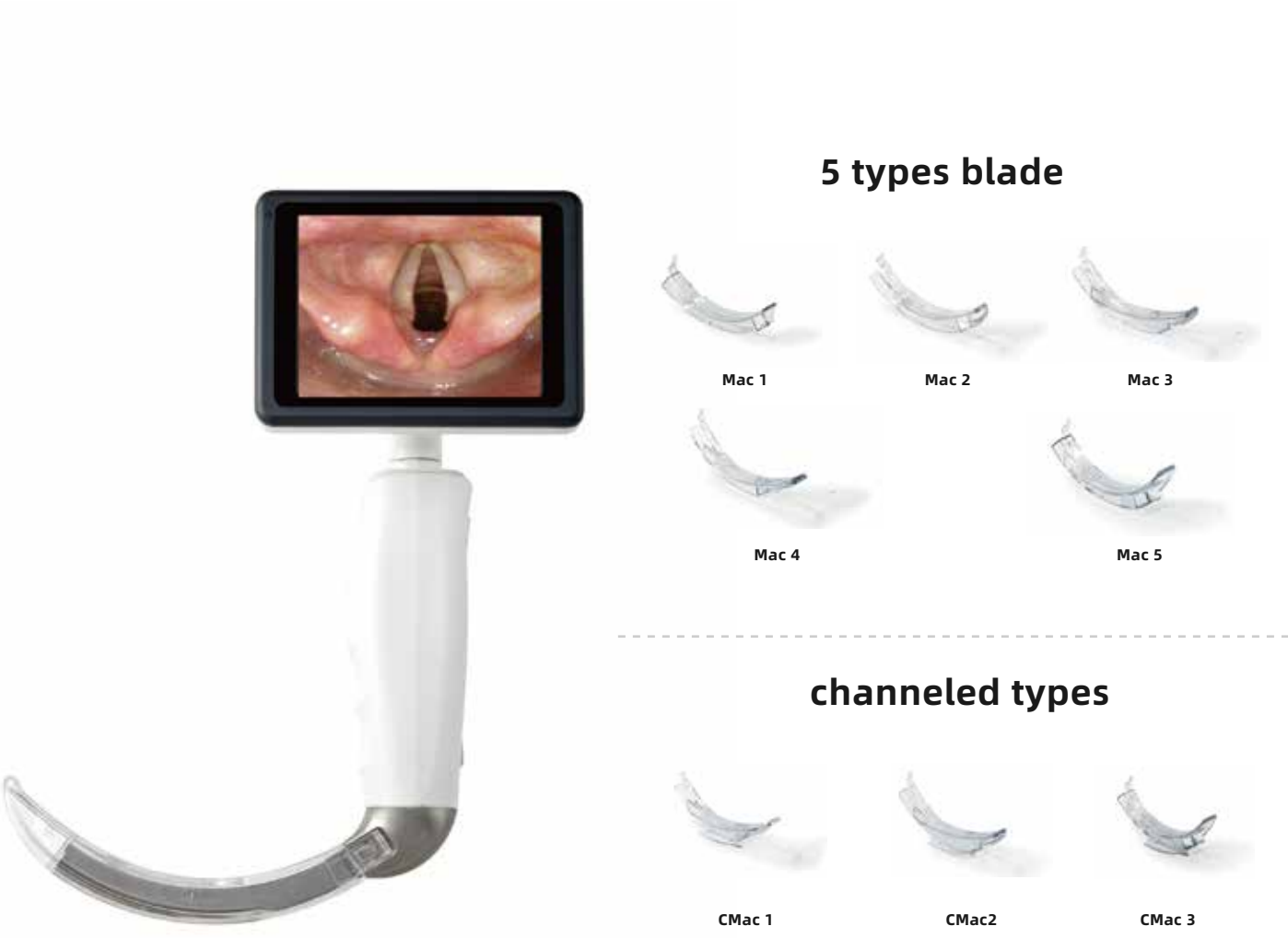


VL3D/VL4D

Video
Laryngoscope

Blade type-Disposable

- Diverse model
- 5 sizes of single-use blades(additional 3 channeled types CMac3/4/5)
- Functional
- Easy to operate; One-click button for snapshot and video recording; 140°up/down, 180°left/right rotation; With external monitor connecting capability
- High mobility
- In combination with the 3.5/4 inches monitor, the VL3D/VL4D can be used in different occurrences
- Anti-Fog Technology
- Turn on and ready to go, no need to wipe water mist
- Excellent Image quality
- Using CMOS sensor and powerful LED at the distal tip provides good image quality
- Anti-cross infection
- Single-use blade for optimum protection against cross- contamination



Specification			
Model		VL3D	VL4D
Processor	Display size	3.5 inches full view	4 inches full view
	Display ratio	4:3	5:3
	Display type	TFT-LCD	
	Resolution	640*480 px	800 x 480 px
	Rotation	Up/down 0-140°, Left/right 0-180°	
	Memory	Built-in SD card standard 32GB	
Camera	Resolution	2.0M px	
	Field Angle	66°	
	Illuminance	LED≥400 lx, h=30mm	
Battery	Battery Capacity	Rechargeable 3200mAh lithium-ion battery	
	Working Time	≥120 minutes	
	Battery Life Cycle	≥300 times	
	Charging Times	4-6 hours	
Blade	Material	Polycarbonate	
	Anti-fog	Yes, Anti-fog by heating	
	Size	MAC1:101mm(L)*18mm(W)*34mm(H) MAC2:115mm(L)*21mm(W)*36.5mm(H) MAC3:126.5mm(L)*21mm(W)*39.5mm(H)	MAC4:136mm(L)*22.5mm(W)*43mm(H) MAC5:149.5mm(L)*23mm(W)*51mm(H)
Item code		8801B-PA003	2002B-PA002

VL3R/VL4R

Video
Laryngoscope

Blade type-Reusable

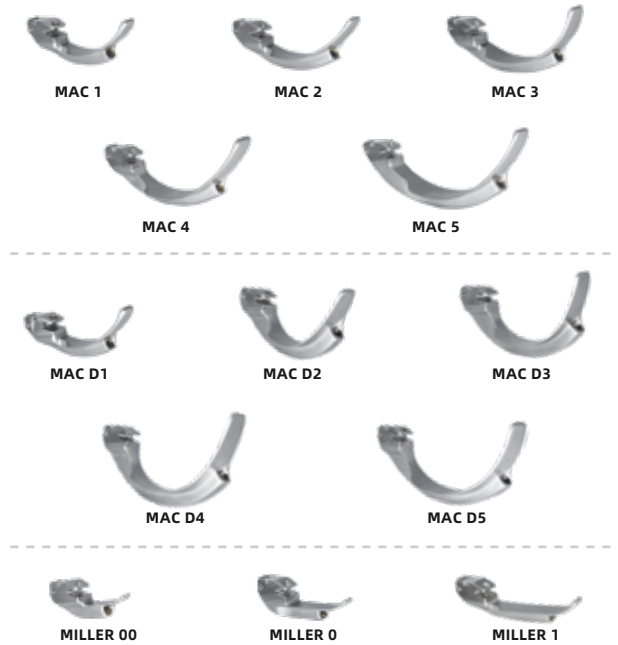
Diverse model
Complete 13 models of blade

Functional
Easy to operate; One-click button for snapshot and video recording;
140°up/down, 180°left/right rotation;
With external monitor connecting capability

High mobility
With the 3.5/4 inches monitor, the VL3R/VL4R can be used in different occurrences

Anti-Fog Technology
Turn on and ready to use, rapid heating advantages to resist lens clouding

Excellent Image quality
Using CMOS sensor and powerful LED at the distal tip provides good image quality



Specification			
Model		VL3R	VL4R
Processor	Display size	3.5 inches full view	4 inches full view
	Display ratio	4:3	5:3
	Display type	TFT-LCD	
	Resolution	640*480 px	800 x 480 px
	Rotation	Up/down 0-140°, Left/right 0-180°	
	Memory	Built-in SD card standard 32GB	
Camera	Resolution	2.0M px	
	Field Angle	66°	
	Illuminance	LED≥400 lx, h=30mm	
Battery	Battery Capacity	Rechargeable 3200mAh lithium-ion battery	
	Working Time	≥120 minutes	
	Battery Life Cycle	≥300 times	
	Charging Times	4-6 hours	
Blade	Material	316 medical stainless steel, anti-shatter	
	Water Resistance	IPX8	
	Anti-fog	Yes, Anti-fog by heating	
Item code		8802B-PA003	2003B-PA003



Rotation



Button on handle



13 types blade

VL3N/VL4N

Video
Laryngoscope

Blade type-New design

Diverse model
Complete 3 models of blade
Cost-effective
Optimized supply chain for nice-sale solution

Functional
Easy to operate; One-click button for snapshot and video recording; 140°up/down, 180°left/right rotation; With external monitor connecting capability

High mobility
With the 3.5/4 inches monitor, the VL3N/VL4N can be used in different occurrences

Anti-Fog Technology
Rapid heating advantages to resist lens clouding

Excellent Image quality
Using CMOS sensor and powerful LED at the distal tip provides good image quality

Anti-cross infection
Blade and handle form one continuous piece for optimum disinfection



High resolution & Field-angle

- 2.0M px camera
- Field angle ≥66°

Optimized Workflow

- USB port

Functional

- Photo & Video recording
- 32G storage

Tailored and Durable

- 3 Blades
- IPX8 Waterproof



HC 2



HC 3



HC 4

Specification			
Model		VL3N	VL4N
Processor	Display size	3.5 inches full view	4 inches full view
	Display ratio	4:3	5:3
	Display type	TFT-LCD	
	Resolution	640*480 px	800 x 480 px
	Rotation	Up/down 0-140°, Left/right 0-180°	
	Memory	Built-in SD card standard 32GB	
Camera	Resolution	2.0M px	
	Field Angle	66°	
	Illuminance	LED≥500 lx, h=30mm	
Battery	Battery Capacity	Rechargeable 1800mAh lithium-ion battery	
	Working Time	≥90 minutes	
	Battery Life Cycle	≥300 times	
	Charging Times	4-6 hours	
Blade	Material	Aluminum-Alloy	
	Water Resistance	IPX8 when waterproof cap is attached	
	Anti-fog	Yes, Anti-fog by heating	
	Size	HC2: 130.2mm(L)*22.1mm(W)*121.8mm(H) HC3: 142.2mm(L)*22.1mm(W)*125.6mm(H) HC4: 153.2mm(L)*22.1mm(W)*130.0mm(H)	



Disposable Blades

Real-time recording helps confirm tube placement and facilitate teaching, ergonomic design for more convenient use.



Handle+Blade



Signal Cable



HugeMed Image Processor

Large monitor-Disposable

Progress in view
1024*768 px output provides perfect view of the vocal cords

Anti-fog
Turn on and ready to go, no need to wipe water mist

Ergonomic design
Quick installation and removal of blades; Quick snapshot and video recording button

Benefits
With handle connecting cable, can help operator resist infection from the procedure of intubation, be more convenient for teaching;
With external monitor connecting capability

Application occurrences
Easy to operate in Ambulance, ICU, OR, ER, Teaching hospital, etc.

Multiple models
5 sizes of single-use blades(additional 3 channeled types CMac3/4/5)

5 types blade



channeled types

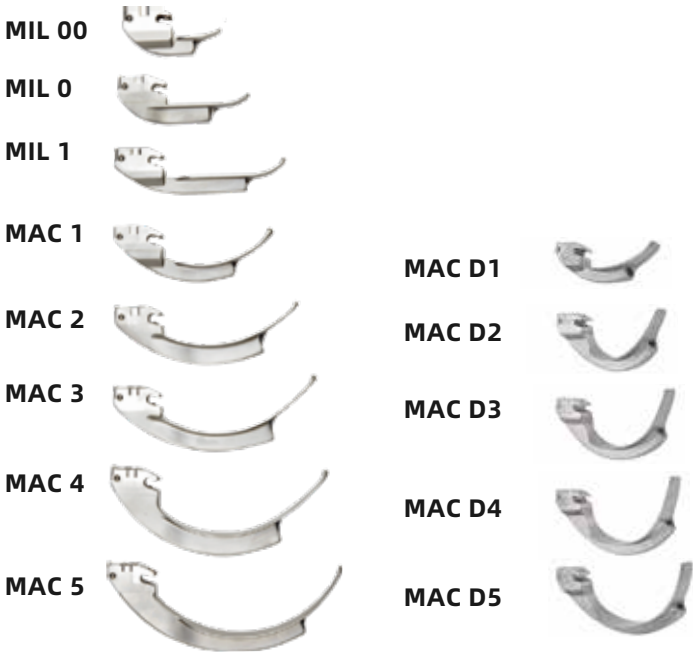


Specification		
Model		VLDM
Processor	Display size	8 inches LCD processor
	Display ratio	4:3
	Display type	TFT-LCD
	Resolution	1024*768 px
	Memory	Built-in SD card standard 32GB
Camera	Resolution	2M px
	Field Angle	66°
	Illuminance	LED≥400 lx, h=30mm
Battery	Battery Capacity	Rechargeable 6400mAh lithium-ion battery
	Working Time	≥4h
	Battery Life Cycle	≥300 times
	Charging Times	4-6 hours
Blade	Material	Polycarbonate
	Anti-fog	Yes, with anti-fog coating
	Size	MAC1:101mm(L)*18mm(W)*34mm(H) MAC4:136mm(L)*22.5mm(W)*43mm(H) MAC2:115mm(L)*21mm(W)*36.5mm(H) MAC5:149.5mm(L)*23mm(W)*51mm(H) MAC3:126.5mm(L)*21mm(W)*39.5mm(H)
Item code		1805B-PA008



Reusable Blades

Digital color monitor with LCD-quality resolution
Reusable video laryngoscope with digital-resolution camera, Innovative blade sizing, angulation, and camera positioning, anti-fog feature, with a rapid heating profile to resist lens clouding and secretions



Handle+Blade



Signal Cable



HugeMed Image Processor

Large monitor-Reusable

Progress in view

1024*768 px output provides perfect view of the vocal cords

Anti-fog

Rapid heating advantages to resist lens clouding and secretions

Ergonomic design

Quick installation and removal of blades; Quick screenshot and video recording button

Benefits

With handle connecting cable, can help operator resist infection from the procedure of intubation, more convenient for teaching; With external monitor connecting capability

Application occurrences

Easy to operate in Ambulance, ICU, OR, ER, Teaching hospital, etc.

Multiple models

13 models of reusable blades

Specification		
Model		VLRM
Processor	Display size	8 inch LCD processor
	Display ratio	4:3
	Display type	TFT-LCD
	Resolution	1024*768 px
	Memory	Built-in SD card standard 32GB
Camera	Resolution	2M px
	Field Angle	66°
	Illuminance	LED≥400 lx, h=30mm
Battery	Battery Capacity	Rechargeable 6400mAh lithium-ion battery
	Working Time	≥4h
	Battery Life Cycle	≥300 times
	Charging Times	4-6 hours
Blade	Material	SUS316L
	Water Resistance	IPX8
	Anti-fog	Yes, Anti-fog by heating
	Size	Miller00: 72mm(L)*14mm(W)*29.5mm(H) MAC5:149.5mm(L)*23mm(W)*51mm(H) Miller0:84mm(L)*15mm(W)*29.5mm(H) MACD1:96mm(L)*18mm(W)*34mm(H) Miller1:110mm(L)*15mm(W)*29.5mm(H) MACD2:115mm(L)*22mm(W)*50mm(H) MAC1:101mm(L)*18mm(W)*34mm(H) MACD3:127mm(L)*22mm(W)*53mm(H) MAC2:115mm(L)*21mm(W)*36.5mm(H) MACD4:136mm(L)*22mm(W)*57mm(H) MAC3:126.5mm(L)*21mm(W)*39.5mm(H) MACD5:147mm(L)*22mm(W)*59mm(H) MAC4:136mm(L)*22.5mm(W)*43mm(H)
Item code		1805B-PA009

VL4DEX

Video
Laryngoscope

Advanced-Disposable

Progress in view

1024*768 px output provides perfect view of the vocal cords

Anti-fog

Rapid heating advantages to resist lens clouding and secretions

Ergonomic design

Quick installation and removal of blades; Quick snapshot and video recording button

Benefits

With handle connecting cable, can help operator resist infection from the procedure of intubation, be more convenient for teaching; With external monitor connecting capability

Application occurrences

Easy to operate in Ambulance, ICU, OR, ER, Emergency Medical Services, Teaching hospital, etc.

Multiple models

New 3 medical PC blades design

Anti-cross infection

Vacuum sterile package for one patient



HugeMed Image Processor



300K PX Camera blade



Signal Cable



Specification		
Model		VL4DEX
Processor	Display size	8 inches LCD processor
	Display ratio	4:3
	Display type	TFT-LCD
	Resolution	1024*768 px
	Memory	Built-in SD card standard 32GB
Camera	Resolution	300K px
	Field Angle	66°
	Illuminance	LED≥500 lx, h=30mm
Battery	Battery Capacity	Rechargeable 6400mAh lithium-ion battery
	Working Time	≥4h
	Battery Life Cycle	≥300 times
	Charging Times	4-6 hours
Blade	Material	ABS+PC
	Water Resistance	/
	Anti-fog	Yes, with anti-fog coating
	Size	HS 2: 145mm(L)*24mm(W)*130mm(H) HS 3: 140mm(L)*23mm(W)*143mm(H) HS 4: 150mm(L)*23mm(W)*152mm(H)
Item code		2105B-PA001

VL4REX

Video
Laryngoscope

Advanced-Reusable

- Progress in view**

1024*768 px output provides perfect view of the vocal cords
- Anti-fog**

Rapid heating advantages to resist lens clouding and secretions
- Ergonomic design**

Quick installation and removal of blades; Quick snapshot and video recording button
- Benefits**

With handle connecting cable, can help operator resist infection from the procedure of intubation, be more convenient for teaching; With external monitor connecting capability
- Application occurrences**

Easy to operate in Ambulance, ICU, OR, ER, Emergency Medical Services, Teaching hospital, etc.
- Multiple models**

New 3 titanium blades design
- Anti-cross infection**

Blade and handle form one continuous piece with IPX8 waterproof design for optimum disinfection



Specification		
Model		VL4REX
Processor	Display size	8 inch LCD processor
	Display ratio	4:3
	Display type	TFT-LCD
	Resolution	1024*768 px
	Memory	Built-in SD card standard 32GB
Camera	Resolution	2M px
	Field Angle	66°
	Illuminance	LED≥500 lx, h=30mm
Battery	Battery Capacity	Rechargeable 6400mAh lithium-ion battery
	Working Time	≥4h
	Battery Life Cycle	≥300 times
	Charging Times	4-6 hours
Blade	Material	Titanium
	Water Resistance	IPX8 when waterproof cap is attached
	Anti-fog	Yes, Anti-fog by heating
	Size	HT 2: 127.5mm(L)*20.5mm(W)*146.5mm(H) HT 3: 139.5mm(L)*20.5mm(W)*150.4mm(H) HT 4: 150.5mm(L)*20.5mm(W)*154.8mm(H)
Item code		2103B-PA001



VL3H

Video
Laryngoscope

Stylet type-Reusable

- Efficiency**
Processor with 0-140°/0-180° rotation improves efficiency of difficult airway intubation
- Ergonomic design**
Fixator at the stylet can fix endotracheal tube well
- Shapeable stylet**
Stylet with Material of Ni-Ti memory alloy can be back to the prototype in 50-60°C water



Stylet type-Disposable

- Efficiency**
Processor with 0-140°/0-180°rotation improves efficiency of intubation
- Ergonomic design**
Fixator at the stylet can fix endotracheal tube well
- Anti-cross infection**
Vacuum sterile package for single use



Specification						
Model		N3065	N3965	H5055	H5065	H5075
Main unit	Type	Reusable		Single-use		
	Display size	3.5 inch LCD processor				
	Display ratio	4:3				
	Pixels	640*480 px				
	Battery	Rechargeable lithium-Ion battery, 3200 mAh; Continuous working time ≥6h				
	Swivel Up and Down	0-130°				
	Swivel Left and Right	0-270°				
Tube	Tube Radian	80mm>R>50mm		R=55mm	R=65mm	R=75mm
	Tube Diameter	3.0 mm	3.9 mm	5.0mm		
	Tube Length	L=280mm	L=350mm	L=350mm		
	Water Resistance	IPX7 when waterproof cap is attached				
Camera	View angle	100°±10%		60°± 5%		
	View depth	3-50mm		20-50mm		
	Camera resolution	160,000 px		160,000 px		
	Illuminance	≥ 400 lx, h=20mm				
Item code		8830B-PA001	8830B-PA002	/	/	/

VL3S

Video
Laryngoscope



Display

Horizontal and vertical rotation angle: 120°
HD full view screen.
6 function buttons, USB port, HDMI port for big display



Quick Handlings

1 lock design
Fast installation and disassembling
Stay firm and efficient



Angulation Control

Flexible angulation control
Precise location

Camera System

Photo and Video recording function
Easy for clinical teaching and training



Suction Button

Fast Connection; Smooth Suction



Working Channel

Inner diameter:
Several sizes available



Biopsy Valve

Cover the opening to the biopsy port



Insertion part

Fracture resistant smooth flexible and durable



Distal tip part

Dual deflections,160° up 130° down
New CMOS Technology
High brightness LED light source



350mm/650mm working length

Flexible type-Reusable

Features

Portable: Completely mobile, compact and space-saving, particularly in the intensive care unit

Ergonomic design

Marvelous balance for superb handling and to reduce fatigue

Application occurrence

Easy to operate in EMS, ICU, OR, ER, NICU, Teaching hospital, etc.

Benefits

Multiple models permit passage through ETT and DLT; Wide field-of-view and angulation range allow easy orientation in the airway observation



Specification

Model	VL3S							
Processor part	Display size	3.5 inches LCD processor						
	Display ratio	4:3						
	Display type	TFT-LCD						
	Resolution	640*480 px						
	Function	USB&HDMI port; White balance						
Battery	Memory	Taking photo and video recording, built-in 32G memory card						
	Battery Capacity	Rechargeable 1800mAh lithium-ion battery						
	Working Time	Continuous working time ≥6h						
	Battery Life Cycle	≥300 times						
Scope	Charging Times	4-6h						
	Field Angle	110°±10%						
	Configuration	Suction port, biopsy port						
	Distal tip part	160°up 130° down						
	Resolution	160,000 px						
	Water Resistance	IPX7 when waterproof cap is attached						
	Insertion tube							
	Insertion tube size	M58	M52	M40	M39	M30	M28	
	Outer diameter of Insertion tube(mm)	5.8mm	5.2mm	4.0mm	3.9mm	3.0mm	2.8mm	
	Instrument channel inner diameter(mm)	3.0mm	2.6mm	2.0mm	1.2 mm	1.2 mm	/	
	Working length(mm)	650mm	650mm	650mm	650mm	650mm	650mm	
	Item code (with processor part)	8820B-PA022	8820B-PA023	/	8820B-PA017	8820B-PA018	8820B-PA025	
	Insertion tube size	M52-1		M40-1		M39-1		M28-1
	Outer diameter of Insertion tube(mm)	5.2mm		4.0mm		3.9mm		2.8mm
	Instrument channel inner diameter(mm)	2.6mm		2.0mm		1.2mm		/
	Working length(mm)	350mm		350mm		350mm		350mm
	Item code (with processor part)	8820B-PA019		8820B-PA021		8820B-PA020		8820B-PA024

VLMCF

Video Laryngoscope

Portable Reusable

Progress in view

1024*768 px output provides perfect view of the vocal cords

Benefits

Help operator resist infection from the procedure of intubation, be more convenient for teaching;
Easy to move

Application occurrences

Easy to operate in Ambulance, ICU, OR, ER, Emergency Medical Services, Teaching hospital, etc.

Multiple models

M28/M30/M39/M40/M52/M58/M28-1/M39-1/M40-1/M52-1 (endoscope size same as VL3S)



Signal cable

Specification				
Model	VLMCF			
Processor	Display size	8 inches LCD processor		
	Display ratio	4:3		
	Display type	TFT-LCD		
	Resolution	1024*768 px		
	Function	USB&HDMI port; White balance		
Battery	Memory	Taking photo and video recording, built-in 32G memory card		
	Battery Capacity	Rechargeable 6400mAh lithium-ion battery		
	Working Time	Continuous working time ≥4 h		
	Battery Life Cycle	≥300 times		
	Charging Times	4-6h		
Scope	Field Angle	110°±10%		
	Configuration	Suction port, biopsy port		
	Working length	650/350mm		
	Distal tip part	160°up 130° down		
	Resolution	160,000 px		
	Water Resistance	IPX7 when waterproof cap is attached		
	Item code (with processor part)	1805B-PA012		1805B-PA013
	Item code(scope)	M58 (210-0318-00)	M30 (210-0325-00)	M28 (210-0058-00) M28-1 (210-0363-00)
		M52 (210-0317-00)	M52-1 (210-0365-00)	
		M40 (210-0326-00)	M40-1 (210-0414-00)	
		M39 (210-0057-00)	M39-1 (210-0364-00)	



Quick plug and unplug



Bending angle

MS-8

Image processor

One central system

One processor for all HugeMed' s endoscope, can be used in anesthesiology department, OR, ICU, etc.

IT Solution

With DICOM protocol, MS-8 recorded image and video can be transferred to hospital PACS system. This will effectively improve the efficiency of inter-departmental collaboration

More Connection abilities

Type-C connector for scope and data connecting, USB3.0 for faster data transfer, Wired or wireless networks ability; DVI/HDMI/SDI image output ability

Flexible Mobility

No matter on the trolley or on the table, MS-8 can be placed steadily. The machine has been equipped the new trolley which can be use in different occurrences such as OR, ICU, OPD, etc.



Specification		
Model	MS-8	
Display	Dimension	386.4 (h) x 253.6 (w) x 38.5 (d) mm
	Weight	2.6 kg
	Display size	15.6 inches TFT-LCD
	Display resolution	1080P(1920*1080)px
	Display type	TFT-LCD, touch screen
	Function	Dual view, WiFi, Brightness control, Contrast control, Using time calculator, etc.
Power supply	Working time	Continuous working time ≥4h
	Memory capacity	64 GB
Item code	210-0697-00	

